

# NELSON MPS Multi-Plug System

Firestop Products

## Application

- Nelson MCT is a proven mechanical cable and pipe sealing system for use in commercial building wall and floor penetrations and in marine bulkhead and deck applications providing protection from fire, smoke, water and blast pressures.

## Features

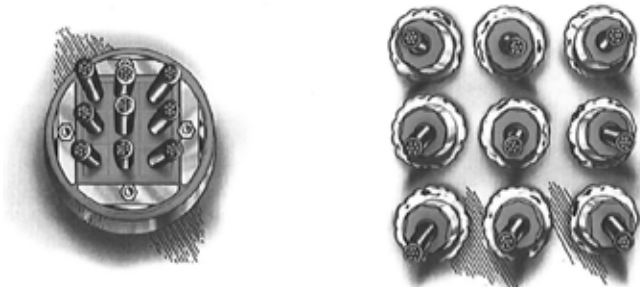
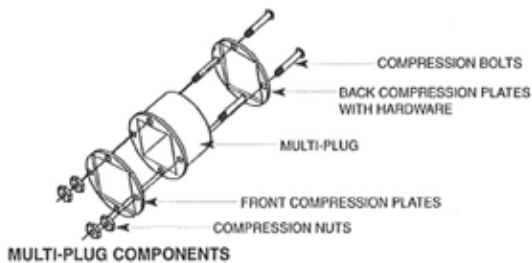
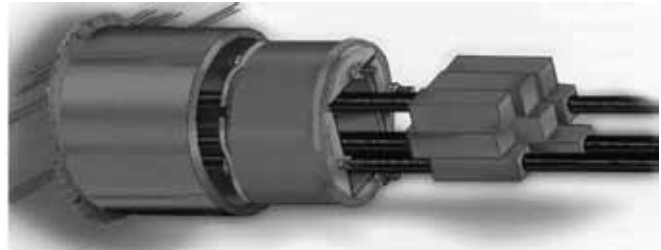
- MPS Multi-Plug System – Molded Tecron Rubber plugs for use in pipe sleeves or cast round openings.
- Multi-Plugs are available in pipe sizes 2", 3", 4", 5", 6" and 8" sizes and utilize Tecron™ modules for sealing around cables.
- Round version of MCT™ for multiple cables/pipes in a circular penetration such as a pipe sleeve
- Consists of round outer shell of Tecron™
- Square inner core accommodates standard MCT™ Tecron™ modules
- Core Modules are locked in place with four compression assemblies
- Quick installation. simple and requires no tools
- Fire, shock and pressure tested
- Convenient, cost effective firestop seal

## Standard Materials

- Body: Tecron™ rubber
- Hardware: Stainless steel

## Certifications and Compliances

- Underwriters Laboratories Inc. UL 1479 and ASTM E-814, Test method for through penetration fire stops.
- U.S. Navy
- U.S. Coast Guard
- ABS (American Bureau of Shipping)



# NELSON MPS Multi-Plug System

## Firestop Products

Multi-Plug	Nominal Schedule 40 Pipe Size					
	2"	3"	4"	5"	6"	8"
	Catalog Number					
	MP-2-30	MP-3-40	MP-4-60	MP-5-80	MP-6-90	MP-8-120
Milti-Plug with Bulkhead Sleeve, 4" Steel	MP-SL-2-30-4S	MP-SL-3-40-4S	MP-SL-4-60-4S	MP-SL-5-80-4S	MP-SL-6-90-4S	MP-SL-8-120-4S
Milti-Plug with Bulkhead Sleeve, 4" Aluminum	MP-SL-2-30-4A	MP-SL-3-40-4A	MP-SL-4-60-4A	MP-SL-5-80-4A	MP-SL-6-90-4A	MP-SL-8-120-4A
Milti-Plug with Deck Sleeve, 12" Steel	MP-SL-2-30-12S	MP-SL-3-40-12S	MP-SL-4-60-12S	MP-SL-5-80-12S	MP-SL-6-90-12S	MP-SL-8-120-12S
Milti-Plug with Deck Sleeve, 12" Aluminum	MP-SL-2-30-12A	MP-SL-3-40-12A	MP-SL-4-60-12A	MP-SL-5-80-12A	MP-SL-6-90-12A	MP-SL-8-120-12A
Tallow Lubricant Tube *						AA0099

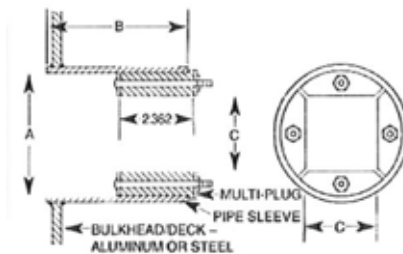
### Multi-Plug/stuffing Tube Comparisons

Cables (.513 inches Diameter) Penetrating 9 Stuffing Tubes and 1 Multi-Plug

Cost Elements	Multi-Plug	Stuffing Tubes
Number of cutouts	1-4-1/2" diameter	9 - 1" diameter
Aproxomite are utilized	16.8 sq. inches	42.25 sq. in*
Number of weldments	1	9
Linear inches weld	14.1"	31.8"
Cable pulling	9 cables through one large opening	9 cables pulled through gland nuts:washers and small tube openings
Special tools	None	Spanner wrenches, Packing Sticks

### Dimensions

Dimension	Reference	2"	3"	4"	5"	6"	8"
A	Pipe Size, Nominal, Inches	2"	3"	4"	5"	6"	8"
B	Pipe Length for Bulkheads	4"	4"	4"	4"	4"	4"
	Pipe Length for Decks	12"	12"	12"	12"	12"	12"
C	Available Space for Insert Blocks & Cables	1.181	1.575	2.362	3.150	3.543	4.724



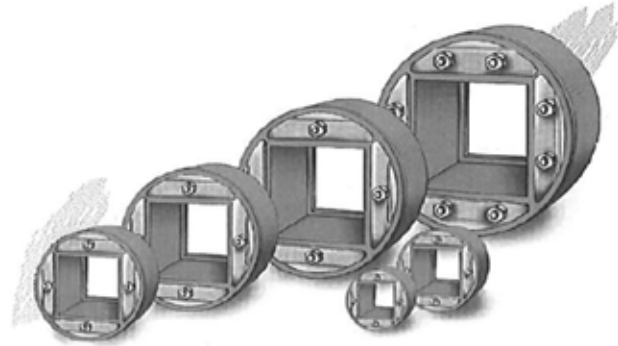
\* Supplied with each frame opening.

# NELSON MPS Multi-Plug System

## Firestop Products

### Illustrated Features

- Multi-Plug penetrators for the 6 standard schedule 40 pipe sizes available provides a square cable access opening.
- A grid format is used to assure simplicity and flexibility in assigning cables to penetrate the opening.
- The grid format provides a modular system for selection of a wide range of interchangeable cables sizes for each penetrator
- Cables are placed between pairs of grooved insert blocks designed for modular application which fit in the Multi-Plug
- Each insert block module size provides interchangeability with a single or group of other module sizes
- The grid system allocates space within each Multi-Plug in a series of squares
- Each square represents .393 inches or 10 millimetres
- Millimeter designations have been adapted for ease in selecting insert blocks (reference module selection chart) which are sized in compatible modules with the grid format



### Multi-Plug Openings Shown in Grid Pattern

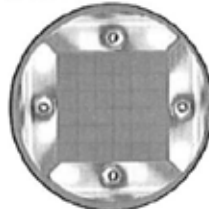
Each Square Represents a 10mm Square



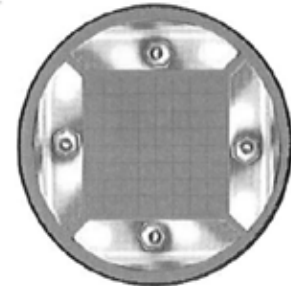
2" Pipe Size - MP 2-30  
9 Squares - 30 mm x 30 mm



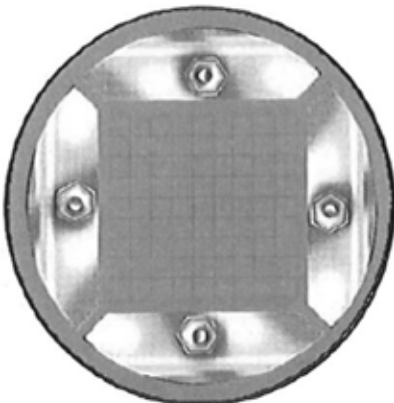
3" Pipe Size - MP 3-40  
16 Squares - 40 mm x 40 mm



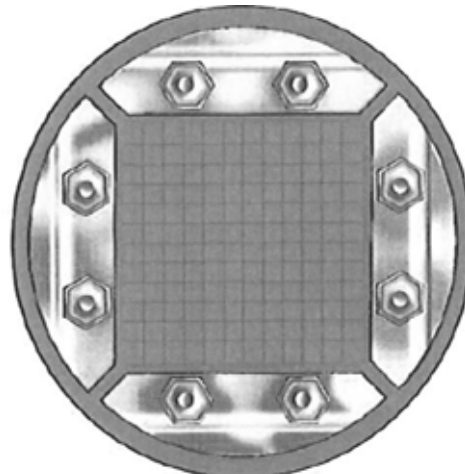
4" Pipe Size - MP 4-60  
36 Squares - 60 mm x 60 mm



5" Pipe Size - MP 5-80  
9 Squares - 80 mm x 80 mm



6" Pipe Size - MP 6-90  
81 Squares - 90 mm x 90 mm



8" Pipe Size - MP 8-120  
144 Squares - 120 mm x 120 mm

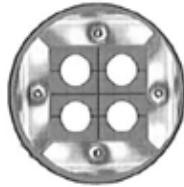
# NELSON MPS Multi-Plug System

Firestop Products Installation Instructions

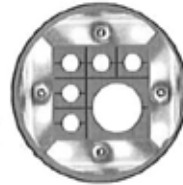
## Typical Examples (4" Pipe Size MP 4-60)



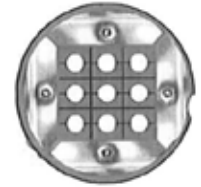
1 cable Module 60



4 cables Module 30



1 cable Module 40, 5 Cables  
Module 20



9 cables Module 20

## Illustrated Featured

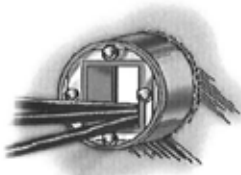


Figure 1

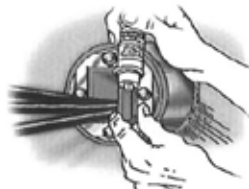


Figure 2

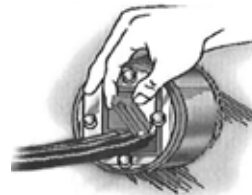


Figure 3

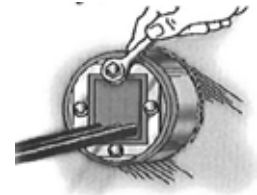


Figure 4

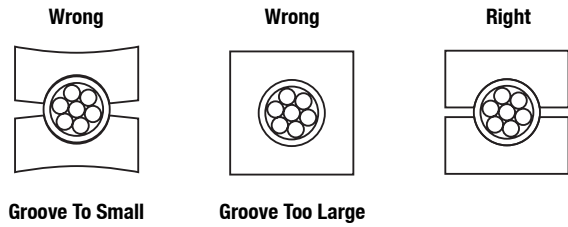
1. Weld pipe sleeve to bulkhead or deck
2. Insert Multi-Plugs using tallow. (Plugs are tapered. Insert initially until plug is snug in sleeve)
3. Cables are pulled through opening (Figure 1)
4. After the cable has been pulled, insert blocks are lubricated with tallow (Figure 2)
5. Blocks are placed in position (Figure 3)
6. Drive plug and insert blocks into sleeve
7. Nuts are alternately tightened until the Multi-Plug is secure in the sleeve (Figure 4)

# NELSON MPS Multi-Plug System

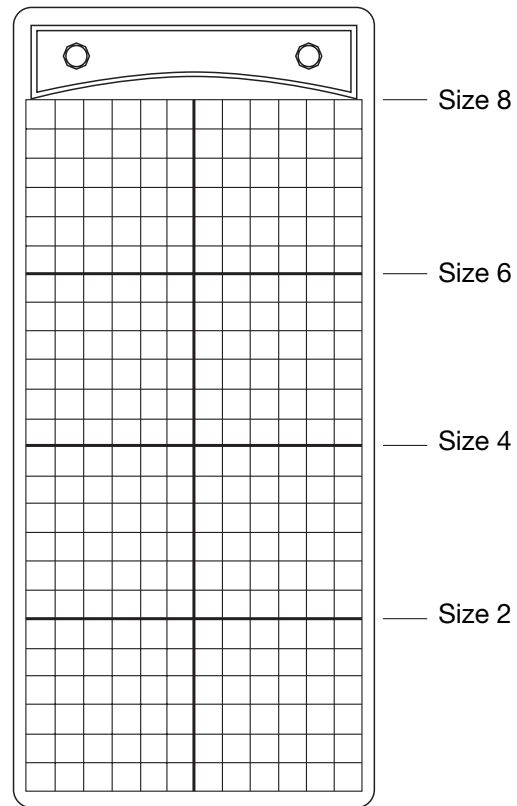
Firestop Products

## Module Selection Chart

Cable Dia. Inches	Tecron Module Catalog Number	Cable Dia. Inches	Tecron Module Catalog Number
Blank	15/0	Blank	40/0
.157	15/4	.866	40/22
.197	15/5	.945	40/24
.236	15/6	1.024	40/26
.276	15/7	1.102	40/28
.315	15/8	1.181	40/30
.354	15/9	1.260	40/32
.394	15/10	1.339	40/34
.433	15/11	1.378	40/35
<hr/>			
Blank	20/0	Blank	60/0
.157	20/4	1.181	60/30
.197	20/5	1.260	60/32
.236	20/6	1.339	60/34
.276	20/7	1.417	60/36
.315	20/8	1.496	60/38
.354	20/9	1.575	60/40
.394	20/10	1.654	60/42
.433	20/11	1.732	60/44
.472	20/12	1.811	60/46
.512	20/13	1.890	60/48
.551	20/14	1.969	60/50
.591	20/15	2.047	60/52
.630	20/16	2.126	60/54
Blank	30/0	2.165	60/55
<hr/>			
.472	30/12	Blank	90/0
.512	30/13	1.969	90/50
.551	30/14	2.165	90/55
.591	30/15	2.362	90/60
.630	30/16	2.559	90/65
.669	30/17	2.756	90/70
.709	30/18	Blank	120/0
.748	30/19	2.953	120/75
.787	30/20	3.150	120/80
.827	30/21	3.346	120/85
.866	30/22	3.543	120/90
.906	30/23	3.740	120/95
.945	30/24		
1.024	30/26		



Select the module having an inside diameter one size smaller than the diameter of the cable.



Each grid square is 0.39"/10 mm x 0.39"/10 mm

FITTINGS: CABLE AND CORD FITTINGS

Fittings